

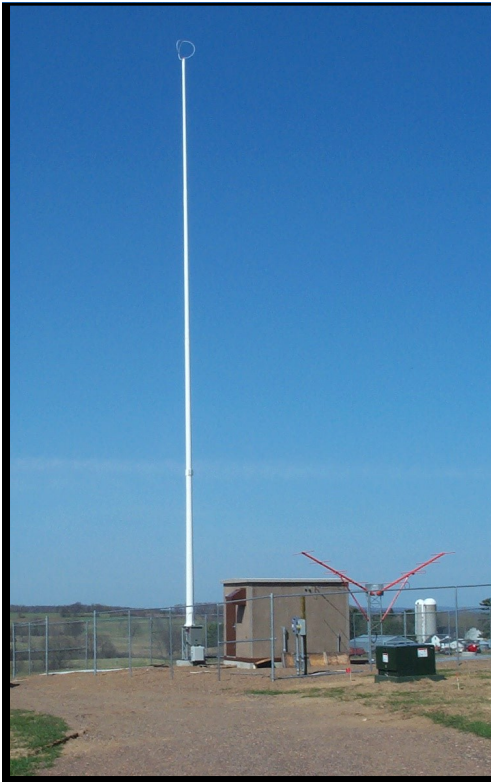


***RICE LAKE REGIONAL AIRPORT (CARL'S FIELD)
RICE LAKE, WISCONSIN***

Client / Wisconsin Bureau of Aeronautics; City of Rice Lake, Wisconsin

Scope of Services / Construction of new airport (Runway 1/19, ramp, terminal area), construction of crosswind Runway 13/31, relocation of VOR/DME to new airport, development of and expansion of hangar areas, MALS-F installation, upgrade of MALS-F to MALS-R for FAA take-over, widening/extension of primary Runway 1/19, terminal building expansions, construction of a SRE building and a public-use hangar, miscellaneous lighting and visual Navaid improvements, and perimeter fencing.

Value of Improvements/ \$9,000,000



Cooper Engineering Services:

- Multiple Airport Layout Plan Updates
- Two Environmental Assessments
- Design Engineering for Improvement Projects
- Obstruction Analysis Surveys
- Visual Navaid Siting for All Four Runways
- Construction Engineering/Staking for Improvement Projects
- Assist Airport/FAA with ILS Installation
- Utility Coordination
- Land Acquisition Boundary and Easement Surveys